

Lightspeed Live Play VP-105 & VP-305

Flexible & Scalable Video Playback



Executive Summary

Engineered for the demanding pace of live production, the Lightspeed Live Play VP-105 and 305 servers deliver 24/7 unwavering reliability. Infrastructure agnostic and seamlessly integrated with Avid and other NLE's and MAM systems, they're built for the most demanding broadcast and professional environments. Live Play VP servers effortlessly handle simultaneous playback from an extensive variety of video file formats. Trim, rearrange, and create playlists with unparalleled playback performance.

Play Anything, Anywhere

- Provides extensive codec and container support including QuickTime, MXF OP1a, MP4, TIFO and more.
- Offers robust and user-friendly browser-based playback.
- Features EDL Import and Export support.

Versatile and Flexible Open Architecture

- Supports playback of open, growing files from Vantage, Live Capture, and many others.
- Supports Newsroom Control systems through the AMP protocol.
- Offers comprehensive REST API for ease of integration with 3rd party MAM's, DAM's and NLE's systems.

Technical Specifications

SDI Outputs (VP-305)

- 8 SD/HD/3G-SDI outputs - Supports up to 1080 50/60p
- Up to 2 Quad-Link Square Division/2 Sample Interleave Outputs – Supports UHD/4K up to 2160 50/60p
- 4 SD/HD/UHD 12G-SDI* outputs
- Up to 16 channels embedded SDI audio 48Khz/16/24bit / Uncompressed
- 4 SD/HD/UHD 12G-SDI* outputs
- 25 or 100Gbe ST 2110 outputs with 2022-7 redundancy

SDI Outputs (VP-105)

- 4 SD/HD/3G outputs -Supports up to 1080 50/60p
- 1 Quad-Link Square Division/2 Sample Interleave – Supports UHD/4K up to 2160 50/60p
- 4 SD/HD/UHD 12G-SDI* outputs
- Up to 16 channels embedded SDI audio 48Khz/16/24bit / Uncompressed
- 25 or 100Gbe ST 2110 outputs with 2022-7 redundancy

External API Control

- REST API
- AMP Protocol

ANC Playback

- Time Code
- AFD
- Closed Captions
- SMPTE 436M

Supported Output File Formats

- Apple ProRes – 422HQ, 422SQ, 422LT, 422 Proxy, 444
- DNxHD, HQX, HQ (220/185 Mbps), HQ TR (145/120 Mbps), SQ (145/120 Mbps), SQ TR (100 Mbps), LB (45/36 Mbps)
- DNxHR, HQX (10 bit), HQ, SQ, LB.
- JPEG2000 Lossy
- JPEG2000 Lossless
- DVCPROHD
- AVC Intra - 50 Mbps 4:2:0, 100 Mbps 4:2:2, 200 Mbps 4:2:2
- AVC Ultra Log GOP 12,25,50
- AVC Baseline, Main, High. Bit Rate - 50 Mbps
- XDCAM HD - 18 Mbps CBR, 25 Mbps CBR, 35 Mbps VBR
- XDCAM HD422 - 50 Mbps CBR
- XDCAM EX - 35 Mbps VBR
- IMX – 30, 40, 50Mbps
- XAVC – Class 50 4:2:0, Class 100 4:2:2, Class 200 4:2:2, Class 300 4:2:2, Class 480 4:2:2, Class 25 Long GOP 4:2:2, Class 35 Long GOP 4:2:2, Class 50 Long GOP 4:2:2, QFHD Class 100 Long GOP 4:2:2, QFHD Class 140 Long GOP 4:2:2, QFHD Class 200 Long GOP 4:2:2
- DV - DV 25 Mbps, DVCPRO 25 Mbps, DVCPRO 50 Mbps, DVCPROHD
- H.264 Baseline, Main, High, High 10, High 4:2:2, max Bit Rate 50Mbps
- H.265/HEVC Main, Main 10, Main Intra,
- MPEG-2
- Uncompressed 10-bit (SD/HD V210)
- FFV1
- And more

Standard Configuration Lightspeed Live Play

Base Chassis

1RU Supermicro Server

CPU

Intel (Dual) 6542Y (VP-305)

Intel (Dual) 4410Y (VP-105)

Number of Cores

2x 24c, 48c (VP-305)

2x, 12c, 24c (VP-105)

Memory

256GB (VP-305)

128GB (VP-105)

OS Drives

2x 800GB NVMe

Power Supply

2x 800/1200W Redundant

GPU

NVIDIA RTX Pro 4000 Blackwell

OS

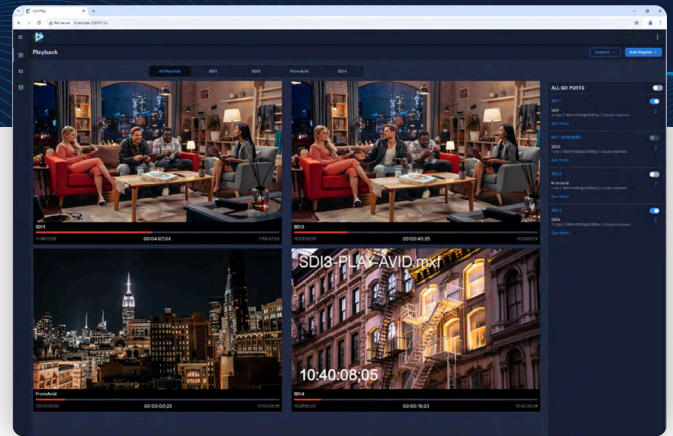
Windows Server 2022

Ethernet Connectivity

2-Port 1G/10G RJ45

Hardware

- 1 RU chassis
- Dual hot swap Power Supplies
- 2-Port 1G/10G RJ45 Ethernet Connectivity



Factory Fitted Options

Ethernet Option 1

2-Port 25G + SR SFP's

Ethernet Option 2

2-Port 100G QSFP + SFP's

10TB (15TB raw) or 20TB (30TB raw) RAIDS
media storage options

Environmental Specifications

Operating Temperature

15°C to 30°C (59°F to 85°F)

Power Consumption (Idle)

345W/2.9A (VP-305)

255W/2.1A (VP-105)

Power Consumption (Full Load)

960W/8.6A (VP-305)

545W/4.5A (VP-105)

Size

H 1.75" x W 19" (w/ears) x L 32.25"

Weight

39 lbs

JUNE 2026

Learn more about Live Play:
telestream.com/live-play



Want to schedule a demo?
Contact us at telestream.com/contact-us